



AEROTRANSPORT LASHING

Lashing using oval and pear holes of ISO corners (ISO 1161)



technical data sheet pages 52-55

INSTALLING AND SECURING



SAFETY + EASY USE

- ✓ Capacity FMA/SWL 120 kN
- ✓ Ring oriented in the direction of load
- ✓ Secured for all load directions
- ✓ Compact – compatible with road requirements
- ✓ Easy to install

- ✓ Meets following requirements :
 - STANAG 3548
 - Guide DGA TA N°27S-CAT
 - Specifics requirements of DGA



with position-holding spring (patented)

STANAG 3548

➔ *standard*

weld-on



ARA type

page 56

screw-on



ARB type

page 57

➔ *special*



SAFETY + EASY USE



- FMA 50 kN and 120 kN
- Position-holding spring
- Facilitates lashing
- Eliminates rattling

➔ *engineering*

➔ *consulting*

➔ *lashing plan*



SAPEM has been active in the field of aerotransport for more than 20 years, and is recognized for the quality of its products and innovative solutions.

All SAPEM lashing products are designed to withstand crash situation loads, and to have no permanent deformation at the nominal force, regardless of the direction of the load.

Our products are approved by DGA and NATO (lashing lug PSP).



Technical data sheets



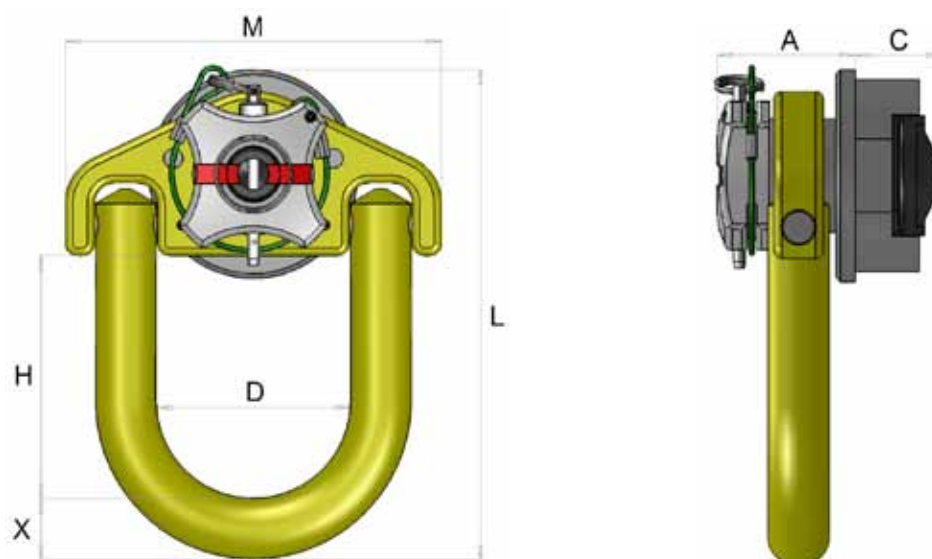
ISO corner secured lashing lug

Patented

Code 344C : for oval hole
Code 345C : for pear hole

NATO code :
4030-14-5686578
4030-14-5686579

meets STANAG 3548



- System rotation of 360° around the axis, ring rotation +/- 90°.
- Secured for all load directions.
- Allows to meet road requirements.

N°	Capacity kN	ISO corner : type of hole	A mm	C mm	D mm	H mm	L mm	M mm	X mm	Mass kg	SAPEM code
1	120	oval	56	35	80	100	201.5	155	25	3.3	344C
2		pear		38							345C

For a lifting use : please contact us.

The equipment meets the requirements of DGA TA N°27S-CAT, STANAG 3548, European Directive 2006/42/EC.
Supplied with a «CE» declaration of conformity.

Warning :
Do not use this equipment with ISO corner that do not meet ISO 1161.

ISO corner secured lashing lug

Patented

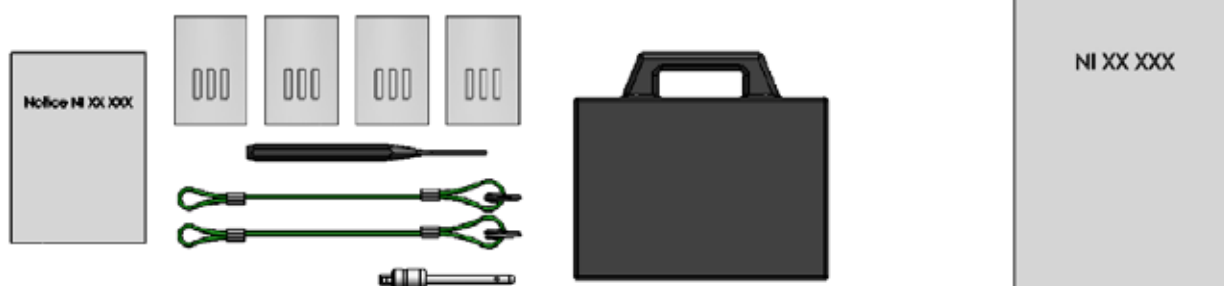
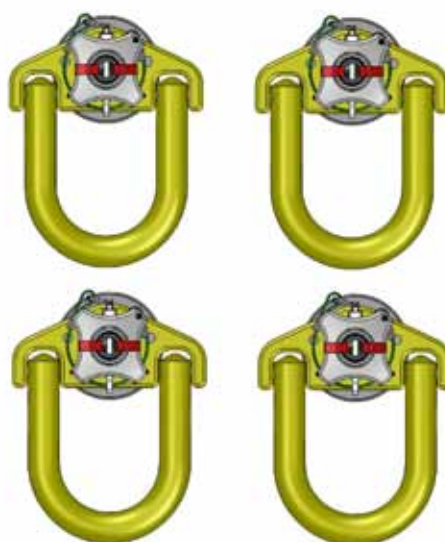
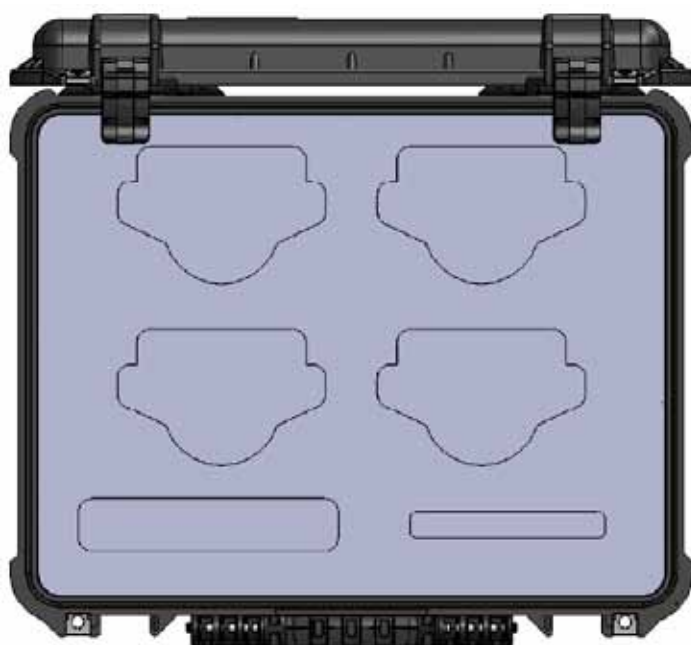
EQUIPEMENTS (option)

Code 344CM4 : for oval hole
Code 345CM4 : for pear hole

NATO code :
8145-14-5686569
8145-14-5686572

CASE EQUIPPED WITH 4 PSP :

Case prepared	code 347CO, 347CP
4 PSP 120 kN	code 344C, 345C
Pin repair kit	code 346C
Instructions manual	



Total mass : 18.4 kg

ISO corner secured lashing lug

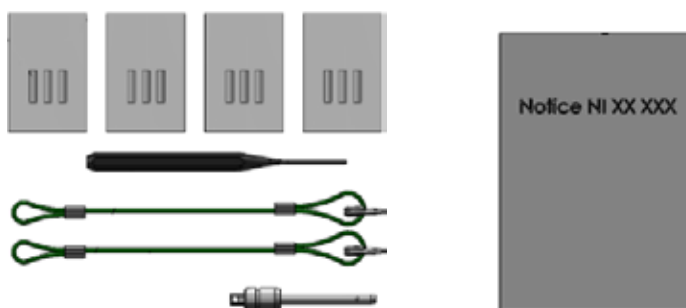
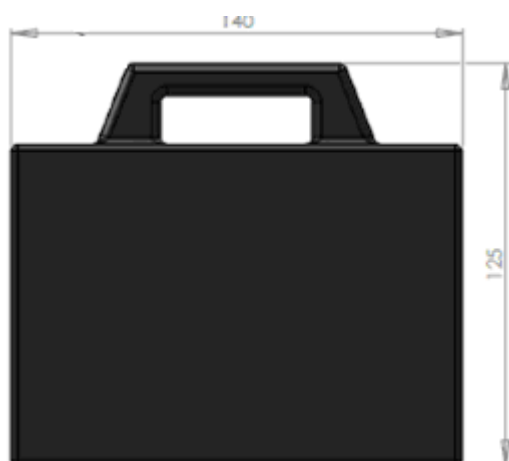
Patented

EQUIPEMENTS (option)

PIN REPAIR KIT

Code 346C

NATO code :
5180-14-5686658



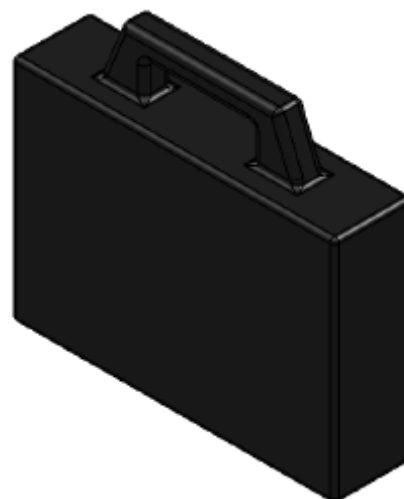
Box

4 bags with spiro pins

Pin-removal tool

Ball pin

Instructions manual



Total mass : 0.2 kg

ISO corner secured lashing lug

Patented

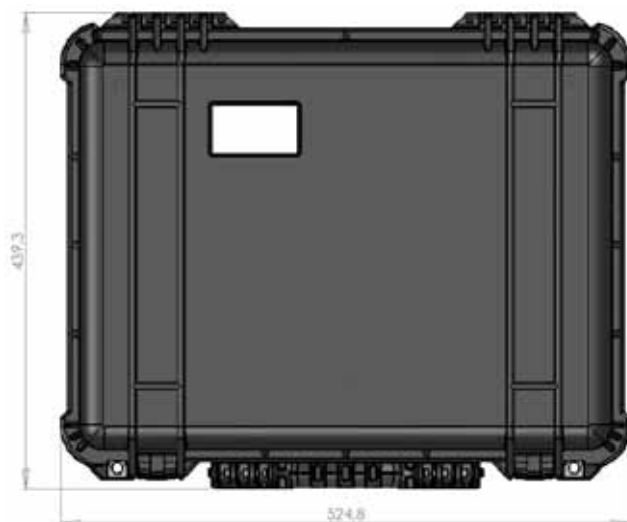
EQUIPEMENTS (option)

Code 347CO : PSP for oval hole
Code 347CP : PSP for pear hole

NATO code :
8145-14-5686577
8145-14-5686574

EMPTY CASE PREPARED FOR 4 PSP

For storage and transport



Total mass : 5 kg

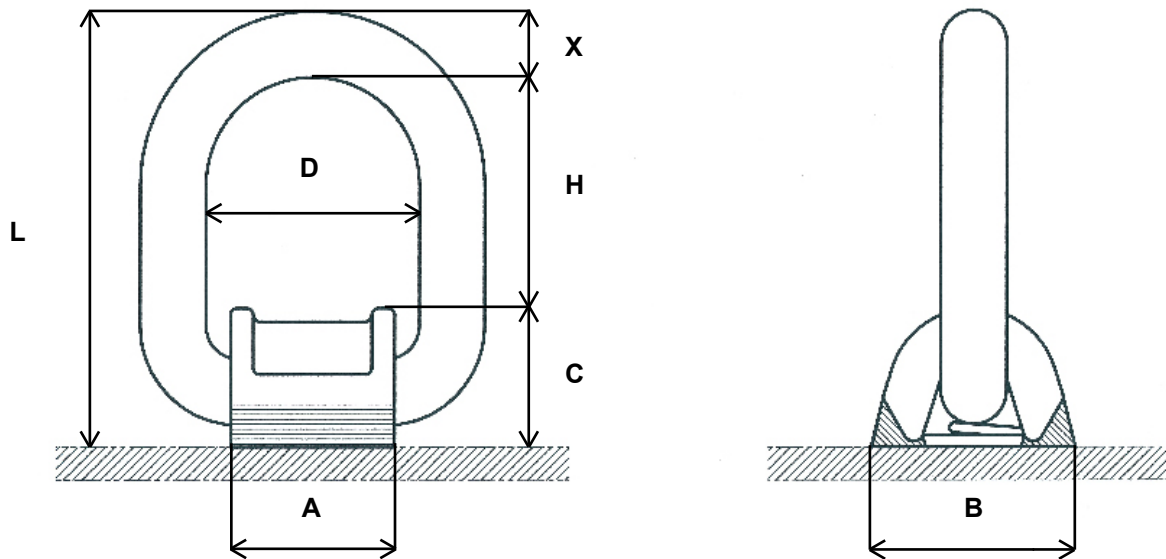
Approvals : ATA 300, IP 67, STAGNAG 4280, DS 81-41.

Lashing lugs ARA

meets STANAG 3548

Code 322

- With stainless steel spring (patented) to maintain in position.
- Rotation + or - 90 degrees from medium position.
- Withstands nominal load without permanent deformation, regardless of the orientation of the lashing force.



N°	Lashing capacity kN	A mm	B mm	C mm	D mm	H mm	L mm	X mm	Mass kg	SAPEM code
2	50	50	80	42	65	70	132	20	1.2	322B
3	120	70	95	52	80	80	157	25	2.4	322C

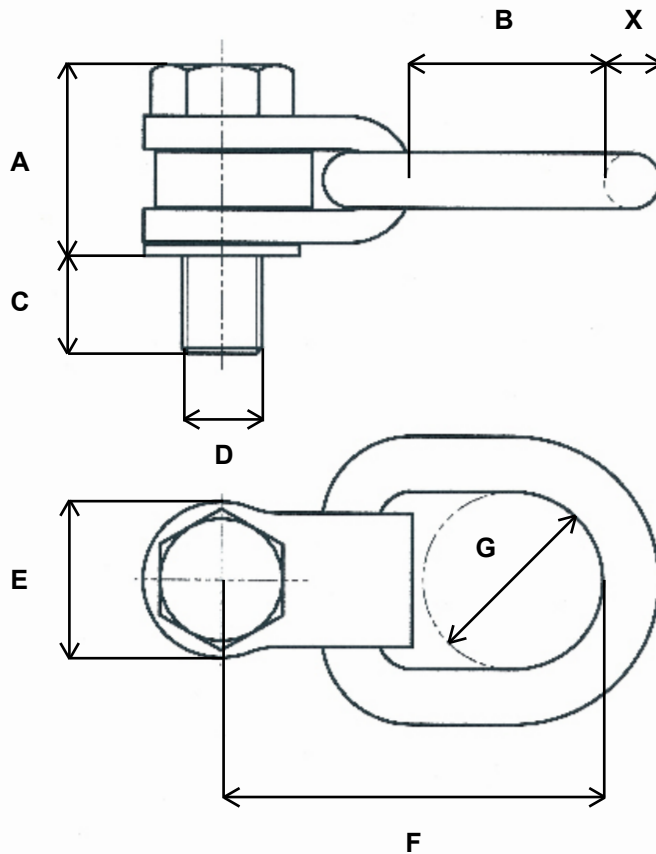
- Welding on the structure without pre-heating.
- Certified resilience at - 40°C.

Special lashing lugs on request :

- Lashing lugs installed on plates to be welded
- Lashing lugs installed on plates to be bolted

Lashing lugs ARB

Code 343



meets STANAG 3548

- With stainless steel spring (patented) to maintain in position.
- 360 degrees rotation around the axis of the screw.
- Withstands nominal load without permanent deformation, regardless of the orientation of the lashing force.

N°	Lashing capacity kN	A mm	B mm	C mm	D (ISO)	E mm	F mm	G mm	X mm	Mass kg	SAPEM code
2	50	76	70	38.5	M30	70	140	65	20	3.5	343B
3	120	86	85	44	M36	70	170	80	25	6	343C

- Certified resilience at – 40°C.

Special lashing lugs on request :

- Lashing lugs installed on plates to be welded
- Lashing lugs installed on plates to be bolted